



**Brown Sheep
Company, Inc.**

**PATTERN
1302**

Ruth Pullover

Designed exclusively for Brown Sheep Company by Melissa Leapman

SKILL LEVEL ~ INTERMEDIATE

SIZE

Woman's small (medium, large, 1XL, 2XL)
Instructions are given for smallest size, with
larger sizes in parentheses. When only 1
number is given, it applies to all sizes.

FINISHED MEASUREMENTS

Bust: 38 (42 ½, 47, 52, 56 ½)"

Total length: 28 ½ (29, 29, 29 ½, 29 ½)"

MATERIALS

- Brown Sheep *Cotton Fleece*, 80%
Pima cotton/20% Merino wool
(100g/250 yds per skein): 6 (6, 7, 7,
8) skeins #CW725 Buttercream
- Size 4 (3.5mm) needles
- Size 6 (4mm) needles *or size needed to
obtain gauge*



GAUGE

22 sts x 24 rows = 4" in Lace pat with larger ndls
To save time and ensure proper fit, take time to
check gauge.

DESIGNER NOTES

- Lace Pattern for back and front is worked
repeating Rows 1-12 until piece measures
approximately 16 ½" from beginning. Repeat
Rows 1-6 for remainder of piece.
- Repeat Rows 1-6 only for sleeves.
- When working armhole, neck, and sleeve
shaping, make sure to keep st count accurate.
Lace pattern must have both a yo *and*
corresponding decrease st. If both cannot be
worked, keep sts in St st.

BACK

With smaller needles, cast on 104 (117, 130,
143, 156) sts. Knit 4 rows. Change to larger
needles.

Working Rows 1-12 of chart, work even in Lace
pat until back measures approx 16 ½" from beg,
ending after Row 12.

Rep **Rows 1-6 only** until back measures 19"
from beg, ending with a WS row.

Shape armholes

Bind off 13 (13, 19, 19, 25) sts at beg of next 2
rows—78 (91, 92, 105, 106) sts.

Work even until back measures 27 (27 ½, 27 ½,
28, 28)" from beg, ending with a WS row.

Shape neck

Mark center 34 (35, 34, 35, 34) sts.



**Brown Sheep Company, Inc. • 100662 County Road 16 • Mitchell, NE 69357
800-826-9136 • FAX 308-635-2143 • www.brownsheep.com**

Next row (RS): Work to first marker, join second ball of yarn and bind off marked sts, work to end of row.

Working on both sides of neck with separate balls of yarn, bind off 2 sts at each neck edge twice, then dec 1 st each neck edge once—17 (23, 24, 30, 31) sts rem each side.

Work even until back measures 27 ½ (28, 28, 28 ½, 28 ½)" from beg, ending with a WS row.

Shape shoulders

Bind off at each arm edge 6 (8, 8, 10, 10) sts twice, 5 (7, 8, 10, 11) sts once.

FRONT

Work as for back until front measures 26 (26 ½, 26 ½, 27, 27)" from beg, ending with WS row.

Shape neck as for back.

Work even until front measures same as back to shoulders.

Shape shoulders as for back.

SLEEVES

With smaller needles, cast on 52 sts. Knit 4 rows. Change to larger ndls.

Working **Rows 1-6 only** of chart, inc 1 st each end every other row 0 (0, 0, 8, 10) times, then every 4th row 8 (19, 22, 19, 17) times, and finally every 4th row 13 (5, 2, 0, 0) times, working added sts into pattern as they accumulate - 94 (100, 100, 106, 106) sts.

Work even until sleeve measures 21 ½ (20 ¾, 20 ¾, 19 ½, 20)" from beg, ending with a WS row. Bind off.

NECKBAND

Sew left shoulder seam.

With RS facing and smaller needles, pick up and knit 105 sts evenly spaced along neckline.

Work even in Garter st until neckband measures ½" from beg.

Next Row: Knit, dec 16 sts evenly - 89 sts.


Continue even in Garter st until neckband measures 1" from beg.

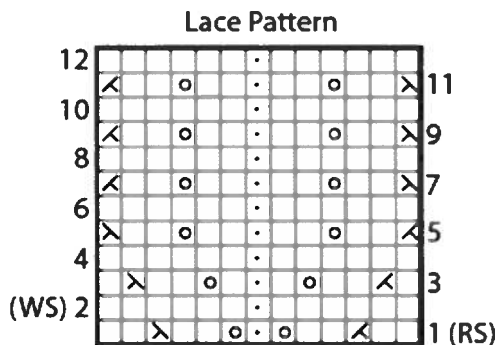
Bind off.

ASSEMBLY

Sew right shoulder seam, including side of neckband.

Sew sleeves into armholes, matching asterisks.

Sew sleeve and side seams. 



□ = On right-side rows: Knit
On wrong-side rows: Purl

• = On right-side rows: Purl
On wrong-side rows: Knit

∧ = K2tog

∨ = Ssk

○ = Yarn over

