



**Brown Sheep  
Company, Inc.**

PATTERN

**1210**

# Jillian Aran Pullover

*Designed exclusively for Brown Sheep Company by Melissa Leapman*

**SKILL LEVEL** ~ Intermediate

## SIZE

Woman's small (medium, large, extra-large, 2x-large) Instructions are given for smallest size, with larger sizes in parentheses. When only 1 number is given, it applies to all sizes.

## FINISHED MEASUREMENTS

**Chest:** 35 (39, 43, 47, 51)"

**Length:** 24 (24½, 25, 25½, 25½)"

## MATERIALS

- Brown Sheep *Lanaloft Worsted*, 100% wool (100g/160 yds per skein): (8, 9, 10, 10) skeins #LL46 Twist of Lime
- Size 7 (4.5mm) needles
- Size 9 (5.5mm) needles *or size needed to obtain gauge*
- Cable needle (cn)
- Stitch markers



## GAUGE

16 sts x 24 rows = 4" in Garter Ridge pat with larger ndls

Panel A (18 sts x 12 rows) = 3" wide

Panel B (24 sts x 24 rows) = 4¼" wide

To save time and ensure proper fit, take time to check gauge.

## STITCH GLOSSARY

**Pm:** Place marker.

**Rib Pattern** (*mult 2 sts*)

**All rows:** \*K1, p1; rep from \* across row.

## Garter Ridge Pattern

**Row 1, 3 and 5 (RS):** Knit.

**Row 2 and all WS rows:** Purl.

**Row 7:** Purl.

**Row 8:** Purl.

Rep Rows 1-8 for pat.

## BACK

With smaller needles, cast on 90 (98, 106, 114, 122) sts.

Work even in Rib pat until back measures 2", ending with a WS row.

Change to larger ndls.

## Set up pat

**Next Row (RS):** Work Row 1 of Garter Ridge pat across 15 (19, 23, 27, 31) sts, pm, Row 1 of Panel A across 18 sts, pm, work Row 1 of Panel B across center 24 sts, pm, Row 1 of Panel A across 18 sts, pm, work Row 1 of Garter Ridge Patt across 15 (19, 23, 27, 31) sts.

Work even in established pats until back measures 14½" from beg, ending with a WS row.

## Shape armholes

Bind off 7 (9, 11, 13, 15) sts at beg of next 2 rows—76 (80, 84, 88, 92) sts.

Work even until back measures 6½ (7, 7½, 8, 8)" above bound-off underarm sts, ending with a WS row.

## Shape back neck

Mark center 32 sts.



**Brown Sheep Company, Inc. • 100662 County Road 16 • Mitchell, NE 69357**  
**800-826-9136 • FAX 308-635-2143 • www.brownsheep.com**

**Next row (RS):** Work in established pat across 22 (24, 26, 28, 30) sts, join second ball of yarn and bind off marked sts, work in established pat to end row. Working on both sides of neck with separate balls of yarn, dec 1 st at each neck edge once—21 (23, 25, 27, 29) sts remain on each side. Work even until armhole measures 7 (7½, 8, 8½, 8½)" above bound-off underarm sts, ending with a WS row.

#### Shape shoulders

Bind off 7 (8, 8, 9, 10) sts at beg of next 4 rows, then 7 (7, 9, 9, 9) sts at beg of following 2 rows.

### FRONT

Work as for back until armhole measures 5 (5½, 6, 6½, 6½)" above bound-off underarm sts, ending with a WS row.

#### Shape front neck

Mark center 24 sts.

**Next row (RS):** Work in established pat across 26 (28, 30, 32, 34) sts; join second ball of yarn and bind off marked sts, work in established pat to end of row. Working on both sides of neck with separate balls of yarn, bind off at each neck edge 4 sts once.

Dec 1 st at each neck edge once – 21 (23, 25, 27, 29) sts remain on each side.

Work even until armhole measures same as back above bound-off underarm sts.

#### Shape shoulders

Bind off at each arm edge 7 (8, 8, 9, 10) sts twice, then 7 (7, 9, 9, 9) sts once.

### SLEEVES

With smaller needles, cast on 44 sts.

Work even in Rib pat until sleeve measures 2" from beg, ending with a WS row.

Change to larger ndl.

#### Set up pat

**Next Row (RS):** Work Row 1 of Garter Ridge pat across 13 sts, pm, Row 1 of Panel A across center 18 sts, pm, Row 1 of Garter Ridge pat to end row. Working in established pats, inc 1 st each end every 4th row 0 (2, 11, 20, 22) times, every 6th row 11 (16, 9, 2, 0) times, then every 8th row 5 (0, 0, 0, 0) times, working new sts into Garter Ridge pat as they accumulate—76 (80, 84, 88, 88) sts.

Work even until sleeve measures 21½ (21½, 21, 20½, 20½)" from beg, ending with a WS row.

#### Shape saddle

Bind off 29 (31, 33, 35, 35) sts at beg of next 2 rows—18 sts.

Work even in established pat until saddle measures same as shoulder.

Bind off in patt.

### COLLAR

Sew sleeves to front and back, using square indented construction (see diagram).

With smaller needles, cast on 18 sts.

Referring to Panel chart A, work even until collar, **when slightly stretched**, fits along neckline.


Bind off.

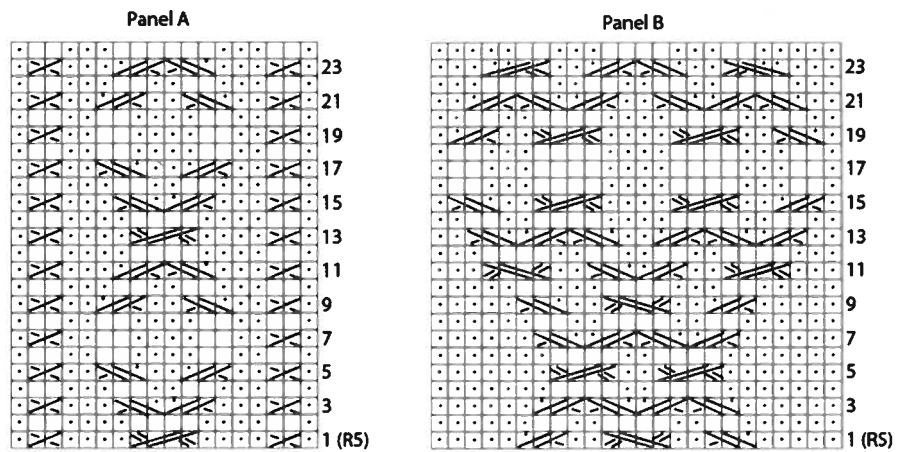
### ASSEMBLY

Sew cast-on and bound-off edges of collar tog.

Having collar seam at center back neck, pin collar to neckline, easing to fit.

Sew collar to neckline.

Sew sleeve and side seams. 



KEY □ = K on RS; P on WS

• = P on RS; K on WS

> < = Right Twist = Slip next st onto cn and hold in back; K1; K1 from cn OR K2tog, leaving them on LH needle; insert point of RH needle between these 2 sts and K the first one again

⋈ = Slip next st onto cn and hold in back; K2; P1 from cn

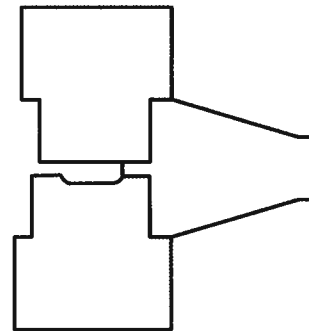
⋈ = Slip 2 sts onto cn and hold in front; P1; K2 from cn

⋈⋈ = Slip 2 sts onto cn and hold in back; K2; K2 from cn

⋈⋈ = Slip 2 sts onto cn and hold in front; K2; K2 from cn

⋈⋈ = Slip 2 sts onto cn and hold in back; K2; P2 from cn

⋈⋈ = Slip 2 sts onto cn and hold in front; P2; K2 from cn



Square Indented Saddle-Shoulder

