



**Brown Sheep
Company, Inc.**

PATTERN

1304

Rochelle Shawl

Designed exclusively for Brown Sheep Company by Melissa Leapman

SKILL LEVEL ~ INTERMEDIATE 

SIZE

One size fits most

FINISHED MEASUREMENTS

30" x 70"

MATERIALS

- Brown Sheep *Cotton Fine*, 80% Pima cotton/ 20% Merino wool (50g/222 yds per skein) 8 skeins #CF240 Pinkaboo
- Size 3 (3.25mm) 40" circular needle **or size needed to obtain gauge**
- Size D/3 (3.25mm) crochet hook



GAUGE

21 sts x 44 rows = 4" in Lace pat **before** blocking

19 sts x 35 rows = 4" in Lace pat **after** blocking

To save time, take time to check gauge.

DESIGNER NOTES

Circular needle is used to accommodate large number of stitches. Do not join; work in rows.

SHAWL

Cast on 363 sts.

Referring to chart, work even until shawl measures approx 24" from beg, ending after Row 6 or 12 of pattern.

Bind off loosely in pattern.

Block to measurements.

CROCHET EDGING

With RS facing, join yarn to one long edge, ch 1.
Rows 1: 1 sc in each cast-on or bound-off st, ch 1, turn.

Rows 2-3: 1 sc in each sc of previous row, ch 1, turn on Row 2 only. Do not turn on Row 3.

Working from left to right, work 1 sc in each sc of previous row.

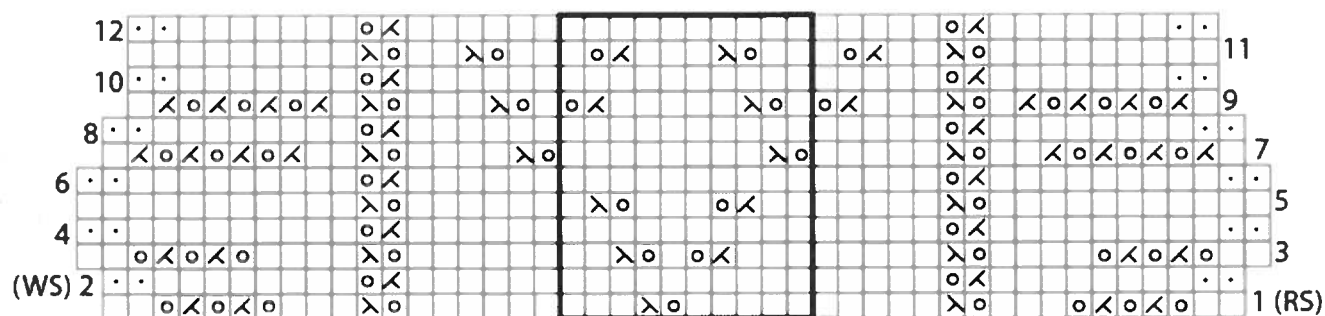
Fasten off.

Repeat for remaining long edge. 



**Brown Sheep Company, Inc. • 100662 County Road 16 • Mitchell, NE 69357
800-826-9136 • FAX 308-635-2143 • www.brownsheep.com**

Lace Pattern



□ = On right-side rows: Knit
On wrong-side rows: Purl

· = On right-side rows: Purl
On wrong-side rows: Knit

< = On right-side rows: k2tog
On wrong-side rows: p2tog

λ = On right-side rows: ssk
On wrong-side rows: ssp

○ = Yarn over



= Pattern repeat