



Plain & Fancy

Designed by Rachel McKinney

Finished Measurements

49¼" x 23" [125 x 58.5 cm]

Materials

Brown Sheep Company Lanaloft Sport (100% wool; 1.75 oz/50 gm, 145 yds/132.6 m): 5 skeins in LL41 Buckwheat

US 5 [3.75 mm] 40" [100 cm] circular needle, or size needed to get gauge

US 4 [3.5 mm] 40" [100 cm] circular needle

Notions

cable needle

tapestry needle

stitch markers

Gauge

26 sts and 32 rows = 4" [10 cm] in Cable pattern on larger needle, blocked

22 sts and 44 rows = 4" [10 cm] in garter stitch on larger needle, blocked

TAKE TIME TO SAVE TIME: CHECK YOUR GAUGE!



Notes

Garter stitch flanks a cable panel of 26 stitches. Increases every fourth row create a triangular wedge on one side, while a 3-stitch selvedge gives the other side a polished look.

Instructions

With smaller ndl, cast on 30 sts.

GARTER BORDER

Rows 1-5 Knit.

Row 6 (RS) K7, m1, k15, m1, k8—32 sts.

Geometry is your friend. The difference in gauge between the intricate cable and the simple garter wedge shapes this clever, stylishly asymmetrical wrap!

Pattern #1601

Brown Sheep Company, Inc.
MITCHELL, NEBRASKA



All Rights Reserved. © 2016
www.brownsheep.com

BODY

Change to larger ndl.

Row 1 (WS) K3, pm, work Row 1 of Cable pattern, pm, k3.

Row 2 (RS) K3, sm, work Row 2 of Cable pattern, sm, kfb, k2—33 sts.

Row 3 K4, sm, work Row 3 of Cable pattern, sm, k3.

Row 4 K3, sm, work Row 4 of Cable pattern, sm, k4.

Rows 5 and 7 Knit to marker, sm, work next row of Cable pattern, sm, k3.

Row 6 K3, sm, work next row of Cable pattern, sm, kfb, knit to end—1 st increased.

Row 8 K3, sm, work next row of Cable pattern, sm, knit to end.


Rep Rows 5-8 until Rows 1-24 of Cable pattern have been worked a total of 16 times—128 stitches. Work Rows 5 and 6 once more—129 sts.

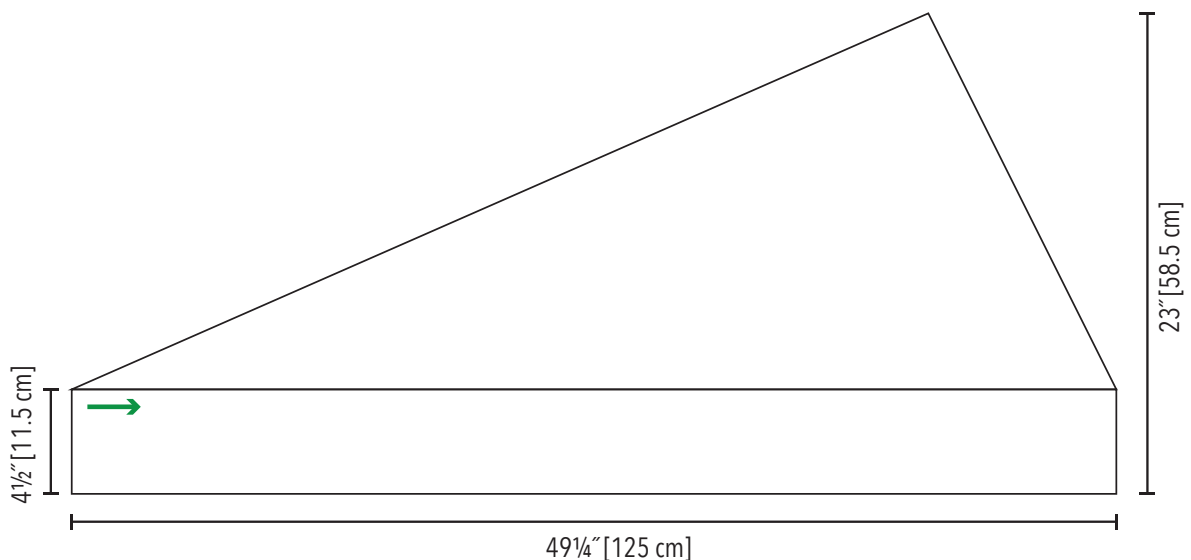
GARTER BORDER

Change to smaller ndl.

Row 1 (WS) Knit to marker, rm, k3, k2tog, k14, k2tog, k5, rm, k3—127 sts.

Rows 2-5 Knit.

Bind off. Weave in ends. Block. 



CABLE

Panel of 26 sts

- Row 1 (WS) K3, p4, k2, p2, k4, p2, k2, p4, k3.
- Row 2 (RS) P3, 2/2 RC, p2, k2, p4, k2, p2, 2/2 RC, p3.
- Row 3 Repeat Row 1.
- Row 4 P3, k4, p2, k2, p4, k2, p2, k4, p3.
- Row 5 Repeat Row 1.
- Row 6 P3, 2/2 RC, p2, 2/1 LPC, p2, 2/1 RPC, p2, 2/2 RC, p3.
- Row 7 K3, p4, k3, p2, k2, p2, k3, p4, k3.
- Row 8 P2, 2/1 RPC, 2/1 LPC, p2, 2/1 LPC, 2/1 RPC, p2, 2/1 RPC, 2/1 LPC, p2.
- Row 9 [K2, p2] twice, k3, p4, k3, [p2, k2] twice.
- Row 10 P1, 2/1 RPC, p2, 2/1 LPC, p2, 2/2 RC, p2, 2/1 RPC, p2, 2/1 LPC, p1.
- Row 11 K1, p2, k4, p2, k2, p4, k2, p2, k4, p2, k1.
- Row 12 P1, k2, p4, [2/1 LPC, 2/1 RPC] twice, p4, k2, p1.
- Row 13 K1, p2, k5, p4, k2, p4, k5, p2, k1.
- Row 14 P1, k2, p5, 2/2 LC, p2, 2/2 LC, p5, k2, p1.
- Row 15 Repeat Row 13.
- Row 16 P1, k2, p4, [2/1 RPC, 2/1 LPC] twice, p4, k2, p1.
- Row 17 Repeat Row 11.
- Row 18 P1, 2/1 LPC, p2, 2/1 RPC, p2, 2/2 RC, p2, 2/1 LPC, p2, 2/1 RPC, p1.
- Row 19 Repeat Row 9.
- Row 20 P2, 2/1 LPC, 2/1 RPC, p2, 2/1 RPC, 2/1 LPC, p2, 2/1 LPC, 2/1 RPC, p2.
- Row 21 Repeat Row 7.
- Row 22 P3, 2/2 RC, p2, 2/1 RPC, p2, 2/1 LPC, p2, 2/2 RC, p3.
- Row 23 Repeat Row 1.
- Row 24 Repeat Row 4.



Cable Chart

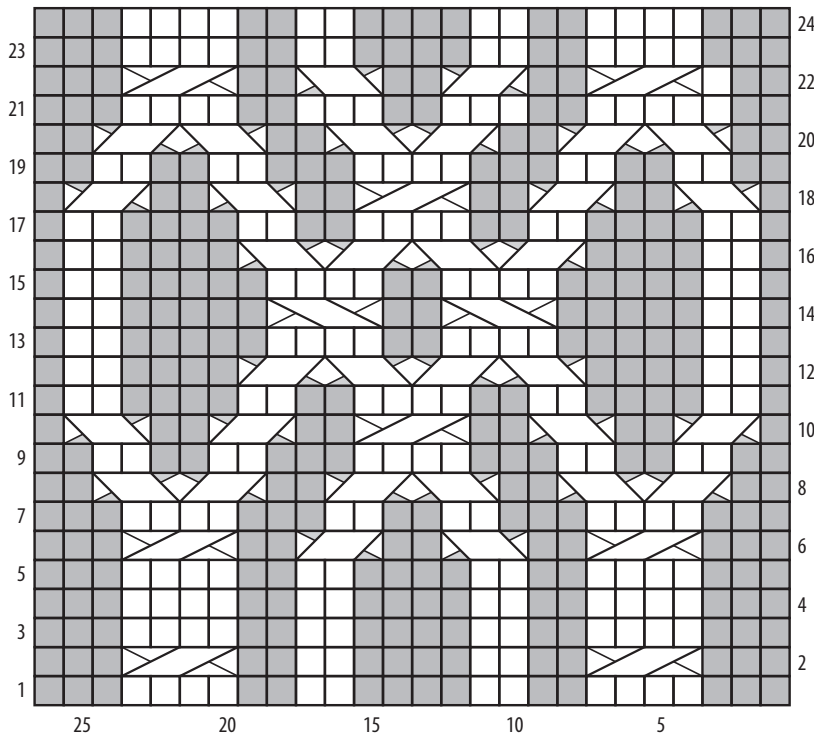








Chart Key

-  K on RS, p on WS
-  P on RS, k on WS
-  2/1 RPC Sl 1 to cn to back, k2; p1 from cn
-  2/1 LPC Sl 2 to cn to front, p1; k2 from cn
-  2/2 RC Sl 2 to cn to back, k2; k2 from cn
-  2/2 LC Sl 2 to cn to front, k2; k2 from cn

ABBREVIATIONS

cn = cable needle

k = knit

k2tog = knit two stitches together

kfb = knit front and back in same stitch

m1 = make one

ndl(s) = needle(s)

p = purl

pm = place marker

rep = repeat

rm = remove marker

RS = right side

sl = slip purlwise

sm = slip marker

st(s) = stitch(es)

WS = wrong side

2/1 RPC = sl 1 to cn, hold to back, k2; p1 from cn

2/1 LPC = sl 2 to cn, hold to front, p1; k2 from cn

2/2 RC = sl 2 to cn, hold to back, k2; k2 from cn

2/2 LC = sl 2 to cn, hold to front, k2; k2 from cn



Photography, layout, editing

Refined Production
www.refinedproduction.com