

Brown Sheep Company, Inc.
One Skein Fancy Facecloth

Pattern

FREE

Designed Exclusively for Brown Sheep Company by Lorna Miser

SIZE

Approximately 12+square including edging

MATERIALS

1 skein Brown Sheep Cotton Fleece (80% cotton/20% merino wool, 3.5 oz/100gm, 215 yards/197m).
Sample is worked in Spanish Olive.

NEEDLES

Size 6 (4mm) needles or size needed to attain gauge

NOTIONS

Tapestry needle
Straight pins

GAUGE

20 sts to 4+in stockinette on size 6 needles

NOTE

Center panel is knit first following chart.
Edging is knit separately then sewn on around the edges.

ABBREVIATIONS

Kfb=increase by knitting in front and back of the
stitch
SSK=right slanting decrease by slip, slip knit these
2 stitches together
PSSO=pass slipped stitch over worked stitch

CENTER PANEL

(See below)

Cast on 40 sts. Work following chart. When chart is complete bind off.

EDGING

Cast on 6 sts.

Row 1 (RS): K3, yo, k1, yo, k2. (8 sts)

Row 2: P6, kfb, k1. (9 sts)

Row 3: K2, p1, k2, yo, k1, yo, k3. (11 sts)

Row 4: P8, kfb, k2. (12 sts)

Row 5: K2, p2, k3, yo, k1, yo, k4. (14 sts)

Row 6: P10, kfb, k3. (15 sts)

Row 7: K2, p3, ssk, k5, k2tog, k1. (13 sts)

Row 8: P8, kfb, p1, k3. (14 sts)

Row 9: K2, p1, k1, p2, ssk, k3, k2tog, k1. (12 sts)



Page 2

Row 10: P6, kfb, k1, p1, k3. (13 sts)

Row 11: K2, p1, k1, p3, ssk, k1, k2tog, k1. (11 sts)

Row 12: P4, kfb, k2, p1, k3. (12 sts)

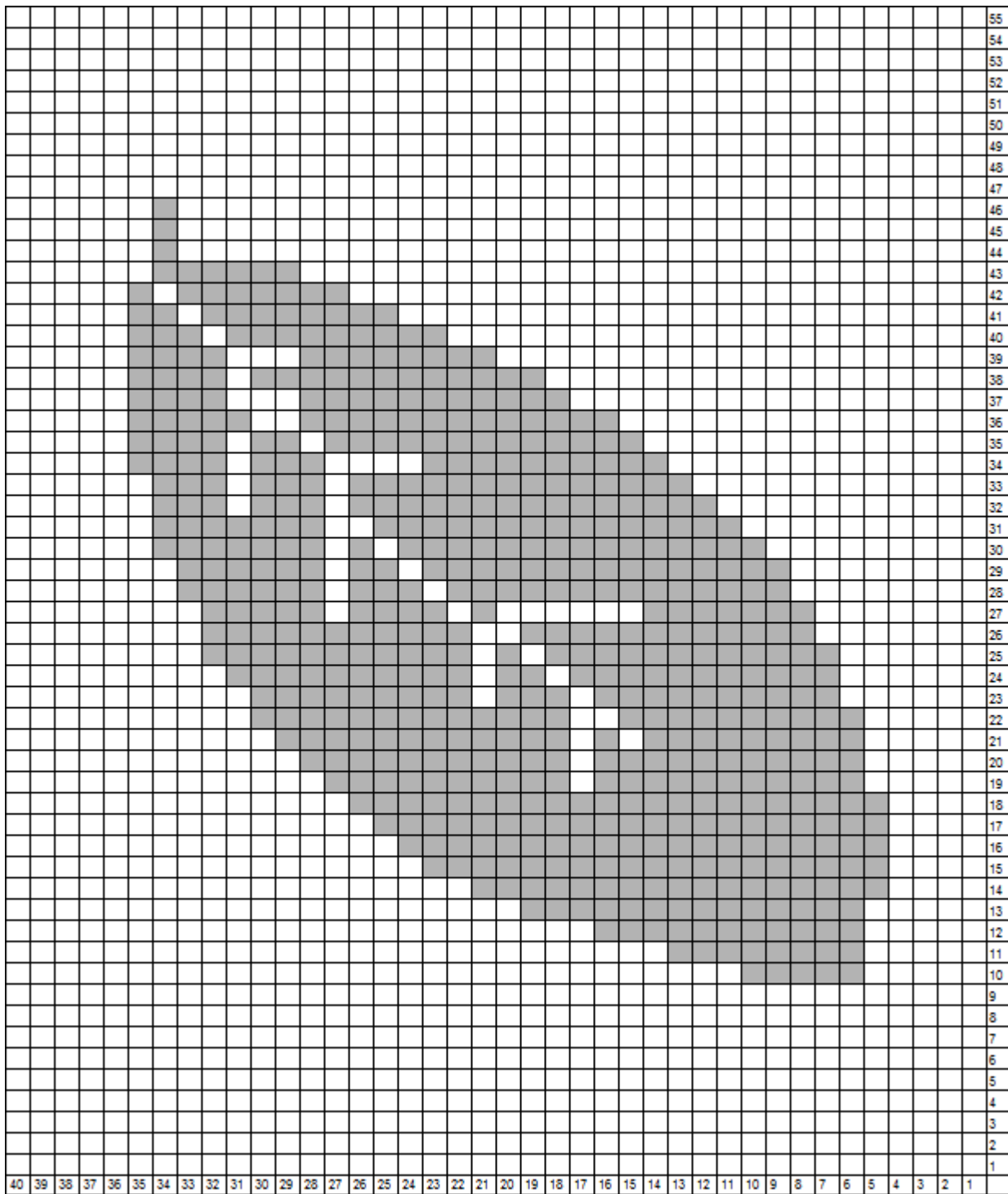
Row 13: K2, p1, k1, p4, slip 1, k2tog, pssso, k1. (10 sts)

Row 14: P2tog, bind off 3 sts, k1, p1, k3. (6 sts)

Work 16 repeats of edging. Bind off. Sew cast on edge to bound off edge. Distribute edging so that there are 4 leaves on each side of center panel. Sew in place. Weave in ends. Block.

NOTE:

Center panel chart is on page three.



	stockinette (k RS, p WS)
	rev stockinette (p RS, k RS)
	K on RS, P on WS
	P on RS, K on WS