



Brown Sheep Company, Inc.

Folded Purse

Pattern

FREE

Designed Exclusively for Brown Sheep Company by Lorna Miser

NEEDLES: #8 (5mm) needles or size needed to get gauge

SIZES: One Size

FINISHED SIZES:

Approximately 10ö wide x 10ö tall

GAUGE: 17 sts and 24 rows = 4ö on #8 needles in garter stitch

MATERIALS: Brown Sheep Lana Boucle 2 skeins LB 21 Rosy Rouge, size 8 circular needles 16ö

NOTES:

Purse begins as a long tube with a flap. This is folded in half and sewn to make 3 pockets. The flap forms the closure.

PURSE

Tube Section

Cast on 84 sts. Join in the round being careful not to twist. Place marker for beg of round. Knit every round until tube measures 20ö. Bind off 42 sts. Work back and forth on remaining 42 sts for flap.

Flap

Next RS row: Knit across 42 rem sts, dec 1 st. 641 sts

Row 1: K2, *k1, yo, ssk, k7, k2tog, yo; rep from * across, k3.

All WS rows: K2, p to last 2 sts, k2.

Row 3: K2, *k2, yo, ssk, k5, k2tog, yo, k1; rep from * across, k3.

Row 5: K2, *k1, (yo, ssk) twice, k3, (k2tog, yo) twice; rep from * across, k3.

Row 7: K2, *k2, (yo, ssk) twice, k1, (k2tog, yo) twice, k1; rep from * across, k3.

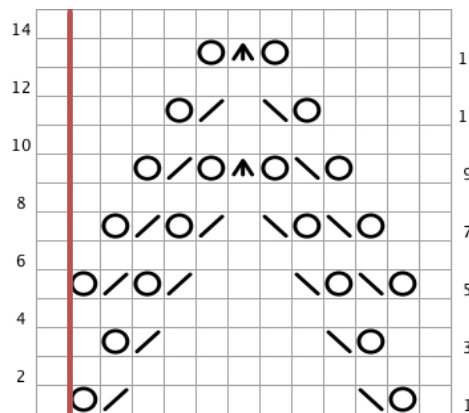
Row 9: K2, *k3, yo, ssk, yo, CDD, yo, k2tog, yo, k2; rep from * across, k3.

Row 11: K2, *k4, yo, ssk, k1, k2tog, yo, k3; rep from * across, k3.

Row 13: K2, *k5, yo, CDD, yo, k4; rep from * across, k3.

Row 14: K2, p to last 2 sts, k2.

Repeat these 14 rows once more then work 4 rows garter st. Bind off.



12 st repeat

Key	
	Central Double Decrease cdd (RS) slip 2 sts, knit 1, pass 2 slip sts over
	Knit k (RS) Knit (WS) Purl
	Knit 2 Together k2tog (RS) Knit 2 stitches together
	Slip Slip Knit ssk (RS) slip, slip, knit slipped sts together
	Yarn Over yo (RS) Yarn Over



Brown Sheep Company, Inc.

Folded Purse

Pattern

FREE

Designed Exclusively for Brown Sheep Company by Lorna Miser

Page 2

Finishing

Block tube and flap flat. Fold tube in half, making sure flap is on outside. Sew through both layers of tube along fold line. Sew sides of purse together where sides of tube meet. This will create 3 pockets.

Handle

Cast on 8 sts. Join in the round being careful not to twist. Knit every round until tube measures 30". Bind off. Sew ends closed. Sew one end of handle to each side of bag OR sew one end to one side of bag and sew 2 D-rings to opposite side, then slide handle through D-rings for an adjustable strap.

Reinforcement (optional)

It can be helpful to reinforce the handle and body of the purse. For the handle, run a 1" wide piece of grosgrain ribbon on the inside of the tube. Sew it at both ends so it can't slip or move. Then sew the handle in place. This keeps the knitting from stretching.

For the purse, cover a piece of cardboard or plastic canvas with fabric and insert in the purse in the back pocket.